



Bensersiel

The Port of Bensersiel is situated about 4.5 km northwest of the City of Esens and is connected to the public road grid of this North Sea spa town. The main functions consist of the ferry traffic to the Island of Langeoog and its supply.

- Port Utilization (tide independent)**
- › Cargo Handling: RoRo transport
 - › Supply and Waste Disposal: several freighters with a length of 37 m each
 - › Ferry Routes: Ferry route Bensersiel – Langeoog, operated by the »Schiffahrt der Inselgemeinde Langeoog« (several ferries with 46 and 33 m in length)
 - › Marina: Seglerverein Harlebucht e. V.

Port

 Draft at MHWL/MLWL
4.41/1.64 m

Port Access

 Length of approach travel from sea
18.5 km

 Width of the navigable channel for port approach
29 m

Port Cargo Handling 2024*

 Cargo Handling
87,231 t

 Number of Passengers Carried
795,357



Langeoog

The Port of Langeoog is situated away from the open sea, east of the southern tip of the island and it is connected to the car-free town of Langeoog via public roadways and the island train. The main functions consist of the tide independent ferry traffic and the island supply of the Island of Langeoog.

- Port Utilization (partially contingent upon the tides)**
- › Cargo Handling: RoRo transport
 - › Supply and Waste Disposal: freighters with a length of 37 m each
 - › Ferry Routes: Ferry route Bensersiel – Langeoog, operated by Schiffahrt der Inselgemeinde Langeoog (ferries with a length of 46 and 33 m, respectively)
 - › Marina: Seglerverein Langeoog e. V.

Port

 Draft at MHWL/MLWL
4.48/1.86 m

Port Access

 Length of approach travel from sea
12 km

 Width of the navigable channel for port approach
180 m

Port Cargo Handling 2024*

 Cargo Handling
82,343 t

 Number of Passengers Carried
722,892



Spiekeroog

The Port of Spiekeroog is situated away from the open sea, south of the town center and it is connected to the car-free town of Spiekeroog by public traffic grid. The port's main functions consist of the ferry traffic and the supply of the Island of Spiekeroog.

- Port Utilization (partially contingent upon the tides)**
- › Cargo Handling: RoRo transport
 - › Supply and Waste Disposal: several multi-purpose freighter with a length of 45.5 m
 - › Ferry routes: Ferry route Spiekeroog - Neuharlingersiel, operated by »Nordseebad Spiekeroog GmbH« (several ferries with a length of up to 47.9 m)
 - › Marina: Spiekerooger Segelclub e.V.

Port

 Draft at MHWL/MLWL
4.15/1.47 m

Port Access

 Length of approach travel from sea
9.6 km

 Width of the navigable channel for port approach
23 m

Port Cargo Handling 2024*

 Cargo Handling
6,857 t

 Number of Passengers Carried
388,253




Wangerooge

The Port of Wangerooge is situated southwest of the town's center, at the southern tip of the island and is connected to the Town of Wangerooge by island train and the public road grid. The main functions consist of the ferry traffic and the island supply of the Island of Wangerooge.


- Port Utilization (partially contingent upon the tides)**
- › Cargo Handling: RoRo transports
 - › Supply and Waste Disposal: several freighters with a length of 45.6 m each
 - › Ferry routes: Ferry route Wangerooge – Harlesiel operated by DB Fernverkehr AG, Inselverkehr Wangerooge (several ferries with up to 46.5 m in length)
 - › Marina: Wangerooger Yachtclub e. V.

Port


 Draft at MHWL/MLWL
4.72/1.91 m


Port Access

 Length of approach travel from sea
8.7 km

 Width of the navigable channel for port approach
28 m

Port Cargo Handling 2024*

 Cargo Handling
156,479 t

 Number of Passengers Carried
318,524

Well Supplied:
We Secure the
Connection Between
the Islands and
the Main Land

Ferry Routes and
Island Supply Norden



Niedersachsen Ports

Niedersachsen Ports is the port infrastructure company with the highest number of public seaports in Germany. We are responsible for five seaports, seven island supply ports, and three regional ports along the coastal region of Niedersachsen. In our locations, we market our commercial and industrial areas and attract port-related companies to settle here.

Some of our core tasks include the development, construction and maintenance of the infrastructure, and in doing so, we are actively designing the future of the ports. We care about the entire region and its economic development: The ports are the center of life and work for many people on a daily basis. We are very much in tune with this responsibility.



How you can contact us:

Niedersachsen Ports GmbH & Co. KG

Branch Norden
Bahnhofstraße 5
26506 Norden
T +49 4931 1804 - 0
F +49 4931 1804 - 600
norden@nports.de

Marketing/Vertrieb
T +49 4721 500-173
marketing@nports.de

www.nports.de/en

Ferry Routes and Island Supply Norden

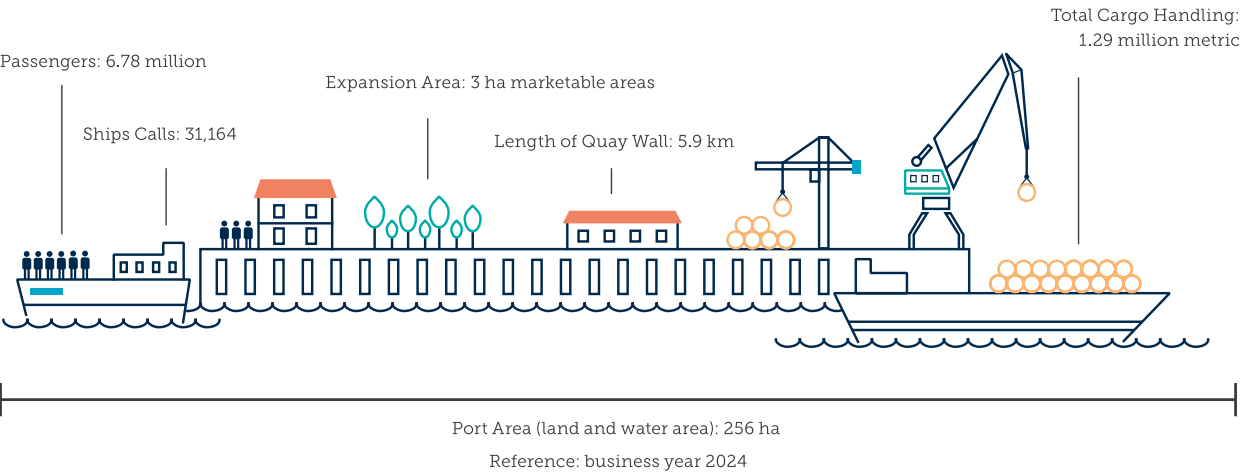
- › More than seven million people transported annually
- › Island supply from one single source
- › Home port for fish trawlers and leisure boats
- › Offshore Service Port Norddeich

Ferry Routes and Island Supply Norden

Islanders and tourists, fishermen and sport boat enthusiasts – especially during the summer months, thousands of people are flocking to the East Frisian ports. Year after year, this logistical challenge is mastered in a responsible way.

In their Norden branch, Niedersachsen Ports is coordinating the operation of seven East Frisian island and coastal ports.

Via the island supply ports Norddeich and Bensersiel, as well as the island ports Norderney, Baltrum, Langeoog, Spiekeroog, and Wangerooge, five East Frisian islands are reliably linked with the main land. The ports represent an important economical factor for the region East Frisia.



Norddeich

Home port for shrimp trawlers, ferries, leisure boats and wind farm operators: Norddeich is situated about 5.5 km northwest of the City of Norden and is directly linked to the rail infrastructure of DB AG, and the Federal Highway B 72. Besides the ferry traffic and the supply of the islands Norderney (tide independent) and Juist (tide dependent), this port offers space and possibilities for various forms of maritime commerce. The port has taken on important service functions in the offshore sector, once prestigious energy companies and offshore service providers settled here. The short distances to the wind farms in the North Sea make Norddeich a preferred service and supply location for the operators.

- Port Utilization (tide independent)**
- › Cargo Handling: roll-on/roll-off transport (RoRo transport)
 - › Supply and Waste Disposal: several freighters with max. 53 m in length
 - › Ferry Routes: Ferry routes Norddeich - Norderney and Norddeich - Juist provided by »AG Reederei Norden-Frisia« (with several ferries of up to 75 m in length)
 - › Different, changing offshore supply vessels
 - › Marina: Yacht-Club Norden e. V.

Port

Draft at MHWL/MLWL
4.81/2.37 m

Port Access

Length of approach travel from sea
16.7 km

Width of the navigable channel for port approach
40 m

Port Cargo Handling 2024*

Cargo Handling
498,795 t

Number of Passengers Carried
2,319,645

Norderney

The Port of Norderney is situated away from the open sea, east of the southern tip of the island, and it is connected to the City of Norderney via public roadways. The ferry traffic and the supply of the island are the most important functions of the port.

- Port Utilization (tide independent)**
- › Cargo Handling: RoRo transport
 - › Supply and Waste Disposal: several freighters with max. 53 m in length
 - › Ferry Routes: Ferry route Norderney - Norddeich, operated by »AG Reederei Norden-Frisia« (several ferries with up to 75 m in length)
 - › Marina: Seglerverein Norderney e. V.

Port

Draft at MHWL/MLWL
4.81/2.38 m

Port Access

Length of approach travel from sea
9.6 km

Width of the navigable channel for port approach
65 m

Port Cargo Handling 2024*

Cargo Handling
457,007 t

Number of Passengers Carried
2,040,293

Baltrum

The Port of Baltrum is situated on the car-free island's southwestern end and is connected through public traffic routes to the town. The port's main functions consist of the ferry traffic and the supply of the Island of Baltrum.

- Port Utilization (partially contingent upon the tides)**
- › Cargo Handling: RoRo transport
 - › Supply and Waste Disposal: several freighters with max. 35 m in length
 - › Ferry Routes: Ferry route Baltrum – Neßmersiel, operated by Baltrum Linie (several ferries with up to 45 m in length)
 - › Marina: Baltrumer Bootsclub e. V.

Port

Draft at MHWL/MLWL
4.23/1.81 m

Port Access

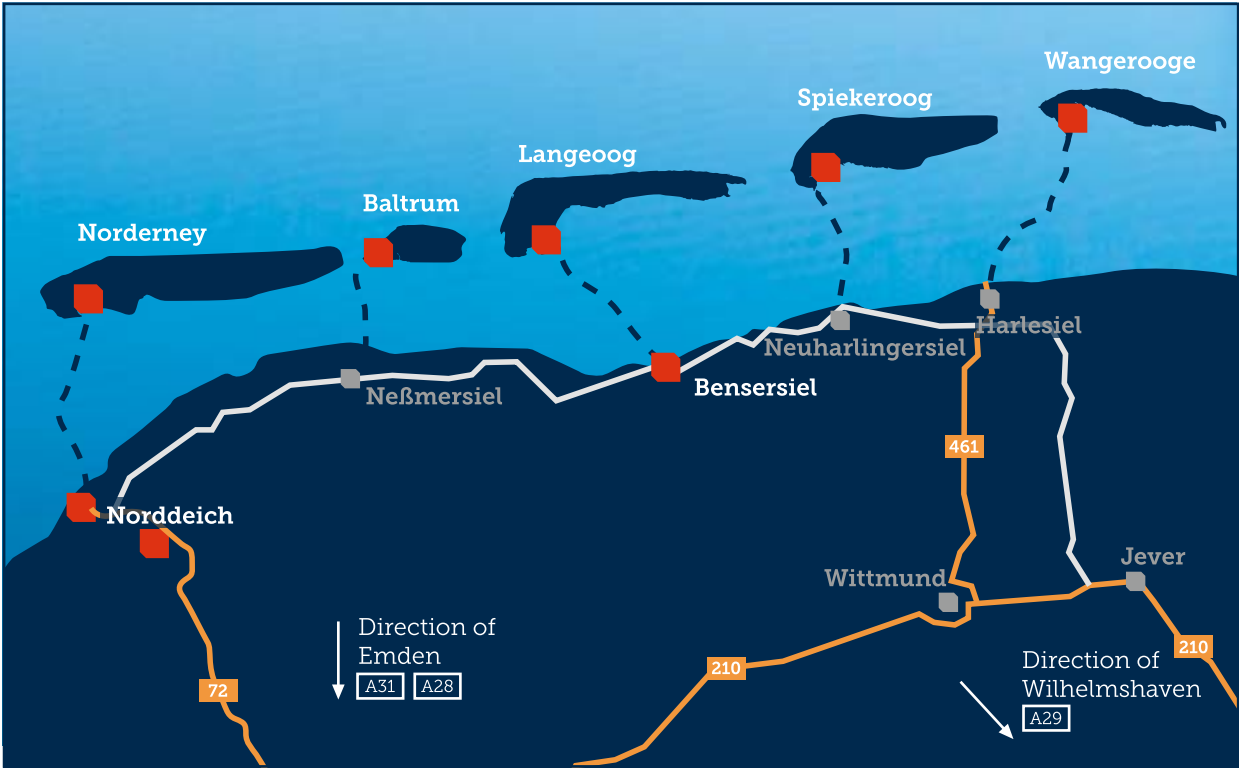
Length of approach travel from sea
24.0 km

Width of the navigable channel for port approach
27.0 m

Port Cargo Handling 2024*

Cargo Handling
9,306 t

Number of Passengers Carried
200,228



Transport Connections

East Frisia is the gate to the world: The island ports are very well connected to the German hinterland: via the ferry routes to the coastal ports, via the rail network to the train stations Norden-Norddeich and Esens, and via Federal Highway B 72 and B 210 to the nearby Federal Freeways Autobahn A31/A28 and A29.

* You may find the latest brochure including cargo handling figures on www.nports.de/en/haefen/inselversorgungshaefen under Downloads.